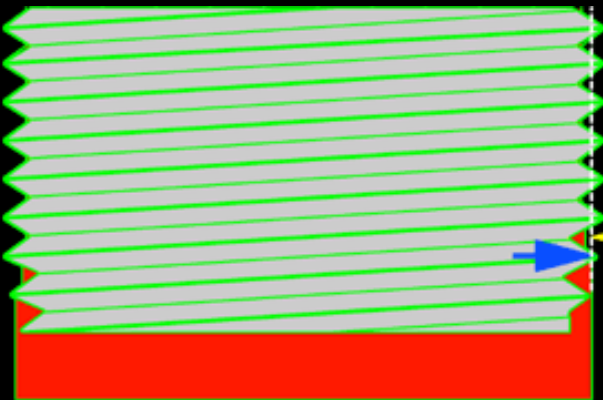


FullThrottle^{net}inc

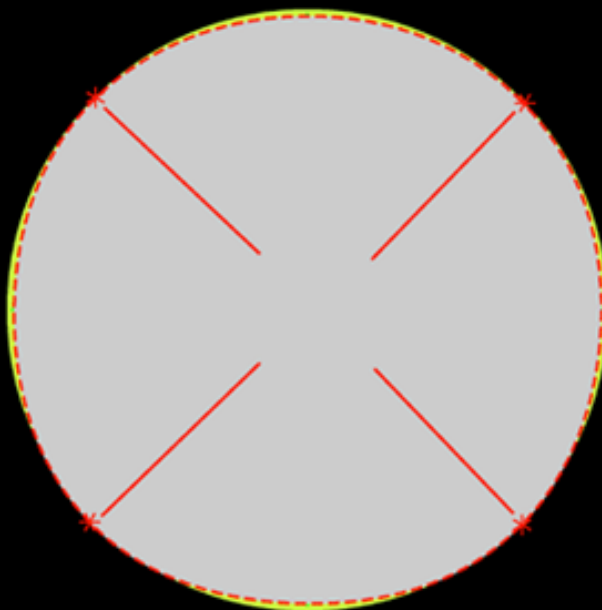
The Full Throttle Inc Super-Duty adaptor forms threads inside the reservoir inlet bore through a process called roll-forming, which displaces material rather than cutting it. The benefits of this process include a thread that is superior in strength to a cut thread, forms a pressure tight seal against the adaptor and does not create chips or shavings that could contaminate your brake system.

The result is a rock solid handbrake solution that will not leak or move!



Dash line represents original bore diameter before thread forming

Pressure from the thread pushing against the side of the hole moves material back into the bore. Because the helix doesn't reach full diameter until nearly the third thread, this process is gradual and can be accomplished with hand tools.

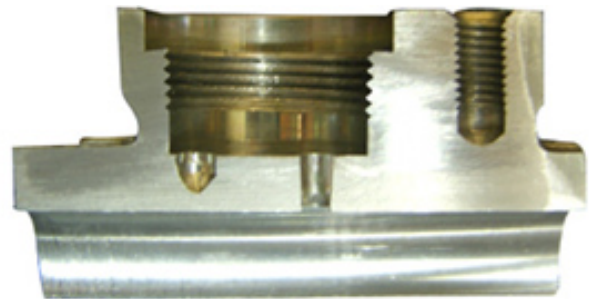


The helix shown above is not round. It utilizes a special contour shown on the left, which only allows full contact pressure at four points. This greatly reduces turning resistance, and produces a higher quality thread.

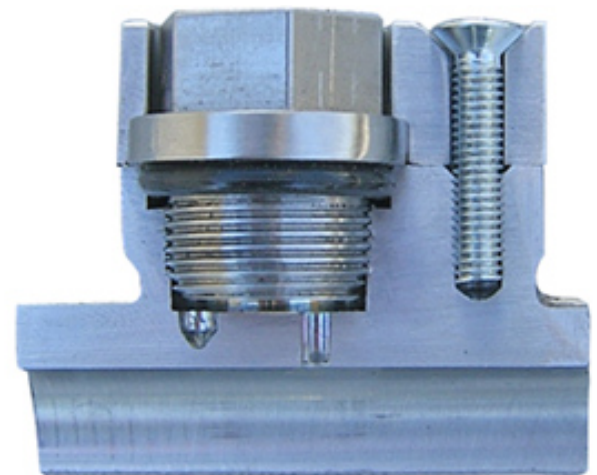
Top View



Honda style reservoir bore before installation of Super-Duty Adaptor



Cut-away of reservoir bore after installation of Super-Duty Adaptor



Cut-away showing Honda style reservoir bore with Super-Duty Adaptor installed and retention lid in position